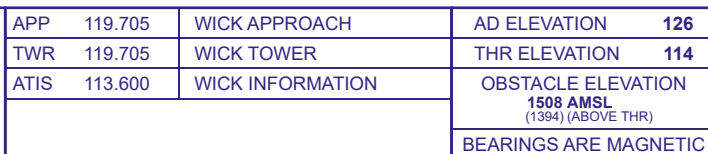
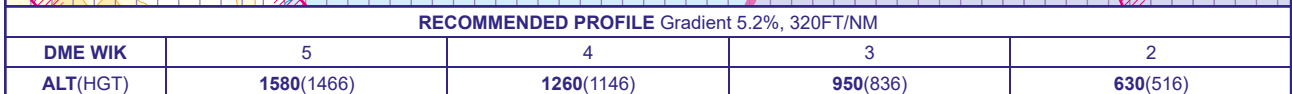


WICK
NDB(L)/DME
RWY 31
(ACFT CAT A,B,C,D)

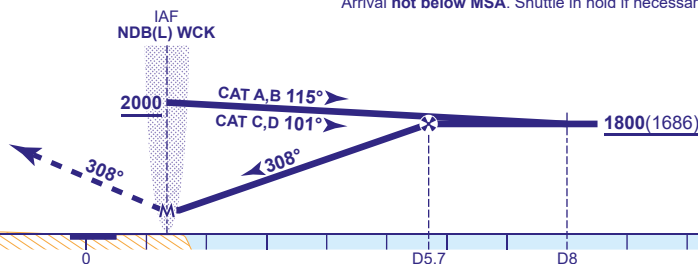


TRANSITION ALTITUDE
3000



Arrival not below MSA. Shuttle in hold if necessary.

Climb straight ahead to **2000** then turn right to **NDB(L) WCK** enter the hold at **2000**, or as directed.



Aircraft Category		A	B	C	D	Rate of descent	G/S KT	160	140	120	100	80
OCA (OCH)	WITH DME	440(326)	440(326)	440(326)	440(326)		FT/MIN	840	740	630	530	420
	NO DME	490(376)	490(376)	490(376)	490(376)							
VM(C)OCA (OCH AAL)	Total Area	630(504)	630(504)	1090(964)	1090(964)							
	North of RWY 13/31	530(404)	620(494)	720(594)	820(694)							

AIRCRAFT UNABLE TO RECEIVE DME WIK (Only available when EG D809(S) and EG D809(C) are inactive)
As for basic procedure fly outbound for 2.5 MIN (CAT A,B); 2MIN (CAT C,D), prior to inbound turn. When established descend to NO DME MDA(H).

NOTE 1 Lowest altitude to commence procedure from hold is **2000**.

CHANGE (14/20): MAG VAR. MAG TRACKS. MORAY FIRTH TMZ EXPANDED.

AERO INFO DATE 16 OCT 20

AD 2-EGPC-8-8